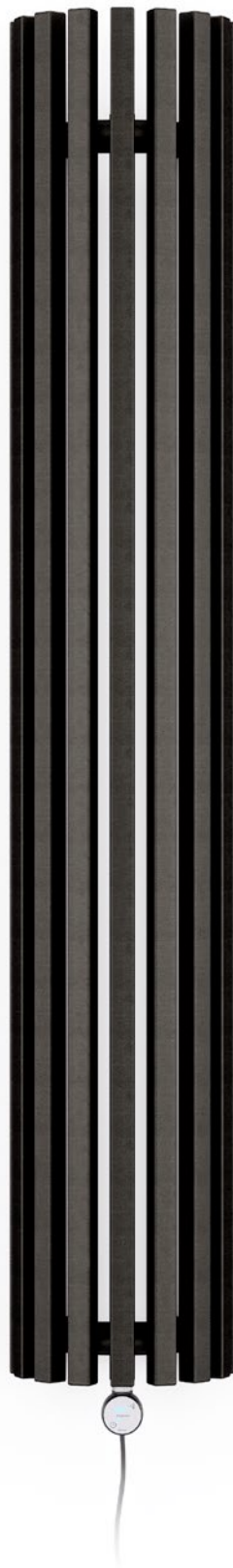


# Triga AN E



**Triga AN E** 1700 $\downarrow$  x 280 $\leftrightarrow$  EX  
colour: Metallic Black

MOA BLUE heating element, chrome



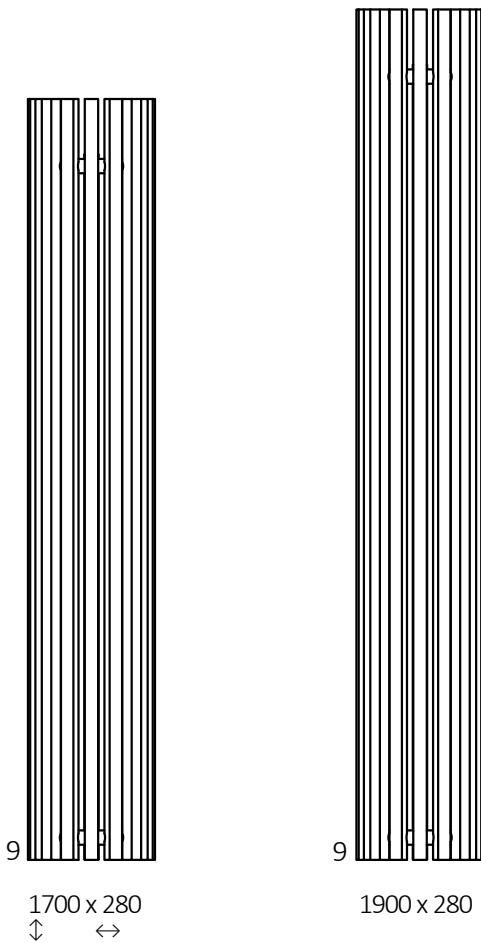
# Triga AN E



## Connections:



## Available sizes:



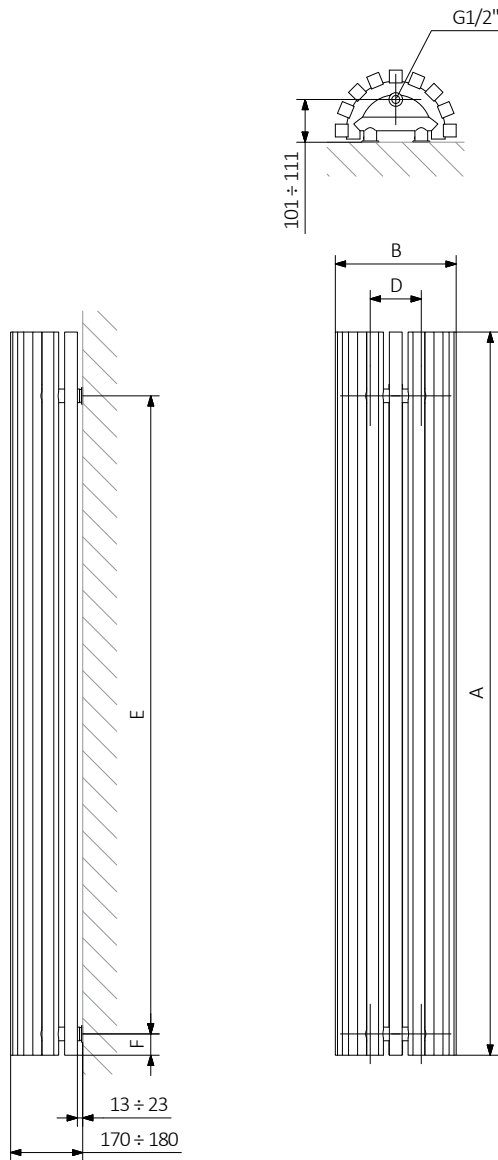
## Specification:

A ↕ [mm]	B ↔ [mm]	☺ [W]	D [mm]	E [mm]	F [mm]	⊞ [dm <sup>3</sup> ]	⚖ [kg]	Product code <small>Configuration code p. 5</small>
1700	280	1000	120	1500	50	11,64	32,04	WLVER170028
1900	280	1000	120	1700	50	12,95	35,52	WLVER190028

# Triga AN E



Technical drawing:

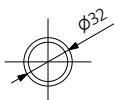


A – Height B – Width C1-C5 – Distance between pipe centres D – Horizontal distance between mounting bracket centres  
E – Vertical distance between mounting brackets F – Distance between a mounting bracket and the bottom of the radiator

Collector:



Pipe:





In the table with technical data, the last column lists product codes. When placing an order, please remember to quote the product code followed by the configuration code as shown in the diagram below:

## Construction of electric heater configuration code:

WLVER170028

PRODUCT CODE  
(located in the table for the product)

K916EXMOBM

CONFIGURATION CODE  
(supplemented by hand)

### Example Configuration

**K 916 EX MOB M**

Package code   Colour code   Connection code   Heating element code   Type of heating element cable code  
*K - carton box*

## Epoxy primer

**E** – Code of epoxy primer is an extra processes.

WLVER170028 K916EX **E** — Extra processes or additions code



## Legenda



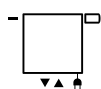
Radiator available in a "water" version.



Radiator suitable for dual fuel connection. Electric heating element can be installed.



Radiator available in electric only version. It comes prefilled with a 'heating medium' and equipped with a heating element. All tested and ready to use.



Connection types dedicated for this radiator. The icon shows the flow and return connections for the radiator as well as the thermostatic valve and heating element position if applicable.



Suggested heating element power output for electric and dual fuel versions.



Weight.



Capacity.



Available in chrome finish.



No additional payment for a color.